

EXPLORING COUNTRIES

# Singapore





Note to Librarians, Teachers, and Parents:

**Blastoff! Readers** are carefully developed by literacy experts and combine standards-based content with developmentally appropriate text.

**Level 1** provides the most support through repetition of high-frequency words, light text, predictable sentence patterns, and strong visual support.

**Level 2** offers early readers a bit more challenge through varied simple sentences, increased text load, and less repetition of high-frequency words.

**Level 3** advances early-fluent readers toward fluency through increased text and concept load, less reliance on visuals, longer sentences, and more literary language.

**Level 4** builds reading stamina by providing more text per page, increased use of punctuation, greater variation in sentence patterns, and increasingly challenging vocabulary.

**Level 5** encourages children to move from "learning to read" to "reading to learn" by providing even more text, varied writing styles, and less familiar topics.

Whichever book is right for your reader, Blastoff! Readers are the perfect books to build confidence and encourage a love of reading that will last a lifetime!

This edition first published in 2015 by Bellwether Media, Inc.

No part of this publication may be reproduced in whole or in part without written permission of the publisher. For information regarding permission, write to Bellwether Media, Inc., Attention: Permissions Department, 5357 Penn Avenue South, Minneapolis, MN 55419.

Library of Congress Cataloging-in-Publication Data

Owings, Lisa, author.

Singapore / by Lisa Owings.

pages cm. -- (Blastoff! Readers. Exploring Countries)

Includes bibliographical references and index.

Summary: "Developed by literacy experts for students in grades three through seven, this book introduces young readers to the geography and culture of Singapore"--Provided by publisher.

ISBN 978-1-60014-986-3 (hardcover : alk. paper)

1. Singapore--Juvenile literature. I. Title.

DS609.O95 2014

959.57--dc23

2013050511

Text copyright © 2015 by Bellwether Media, Inc. BLASTOFF! READERS and associated logos are trademarks and/or registered trademarks of Bellwether Media, Inc. SCHOLASTIC, CHILDREN'S PRESS, and associated logos are trademarks and/or registered trademarks of Scholastic Inc.

Printed in the United States of America, North Mankato, MN.



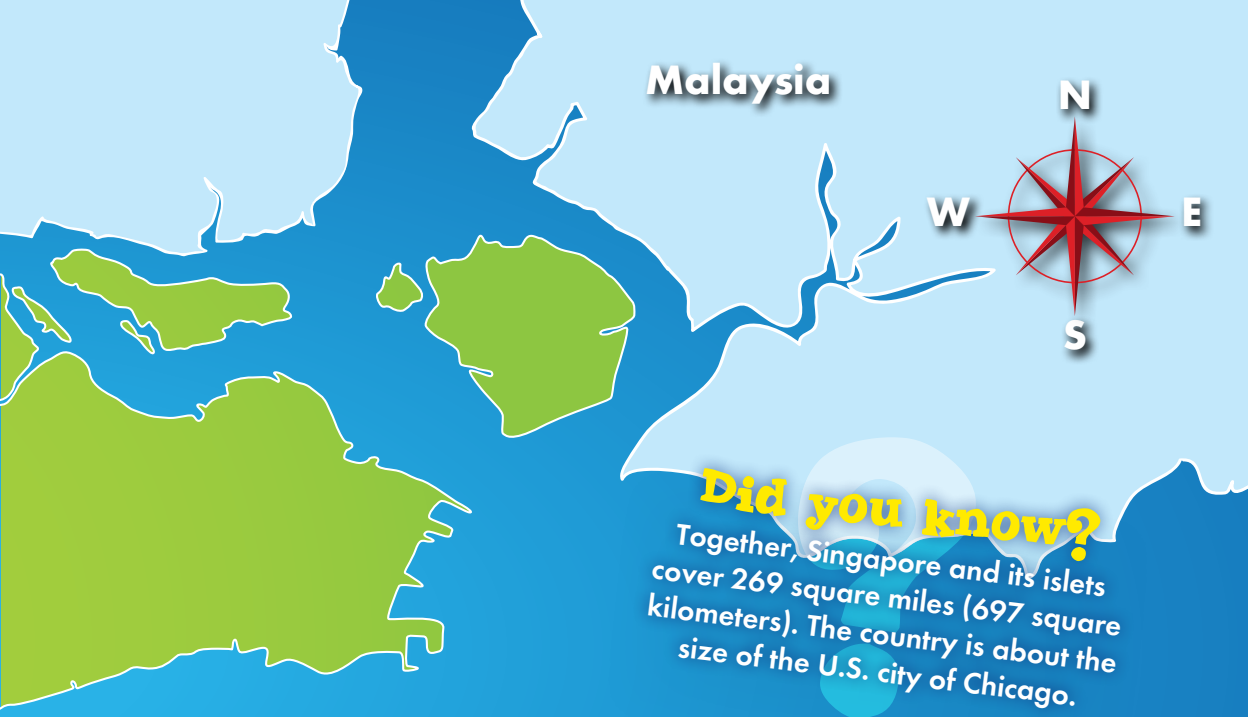
# Contents

Where Is Singapore?	4
The Land	6
Bukit Timah	8
Wildlife	10
The People	12
Daily Life	14
Going to School	16
Working	18
Playing	20
Food	22
Holidays	24
The City in a Garden	26
Fast Facts	28
Glossary	30
To Learn More	31
Index	32

# Where Is Singapore?



Singapore is a small island in Southeast Asia. It lies at the tip of the Malay **Peninsula**, surrounded by some 60 **islets**. Singapore is a city-state. That means the country contains only its capital city and the area around it. The capital is also called Singapore.



### Did you know?

Together, Singapore and its islets cover 269 square miles (697 square kilometers). The country is about the size of the U.S. city of Chicago.



The country of Singapore is nestled between Malaysia and Indonesia. West Malaysia lies to the north across the narrow Johor **Strait**. Off Singapore's southern and western coasts are Indonesian islands. Parts of Malaysia and Indonesia also stretch east of Singapore across the South China Sea.



Rolling hills and **lowlands** make up Singapore's landscape. A cluster of low peaks crowns the center of the island. They include Bukit Timah, Singapore's highest point, which rises to just 538 feet (164 meters). Gentle hills and valleys dot southern and western Singapore. **Mangrove forests** fringe the northern coast and islets. To the east, the land flattens toward the sea.

Several short rivers flow toward the coasts. The Singapore River runs through the heart of the city before emptying into the ocean. Singapore lies very close to the **equator**. Because of this, the country has warm weather year-round. Rain falls most heavily from November to March. The dry season is from May to September.

### Did you know?

Singapore has several human-made lakes. They hold large amounts of water for drinking and other uses.

## MacRitchie Reservoir Park

**You've Just Finished your Free Sample**

**Enjoyed the preview?**

**Buy: <http://www.ebooks2go.com>**